

Installing Taverna

Stian Soiland-Reyes and Christian Brenninkmeijer
University of Manchester

<http://orcid.org/0000-0001-9842-9718>

<http://orcid.org/0000-0002-2937-7819>

Bonn University, 2014-09-01 / 2014-09-03

<http://www.taverna.org.uk/>



*This work is licensed under a
[Creative Commons Attribution 3.0 Unported License](http://creativecommons.org/licenses/by/3.0/)*

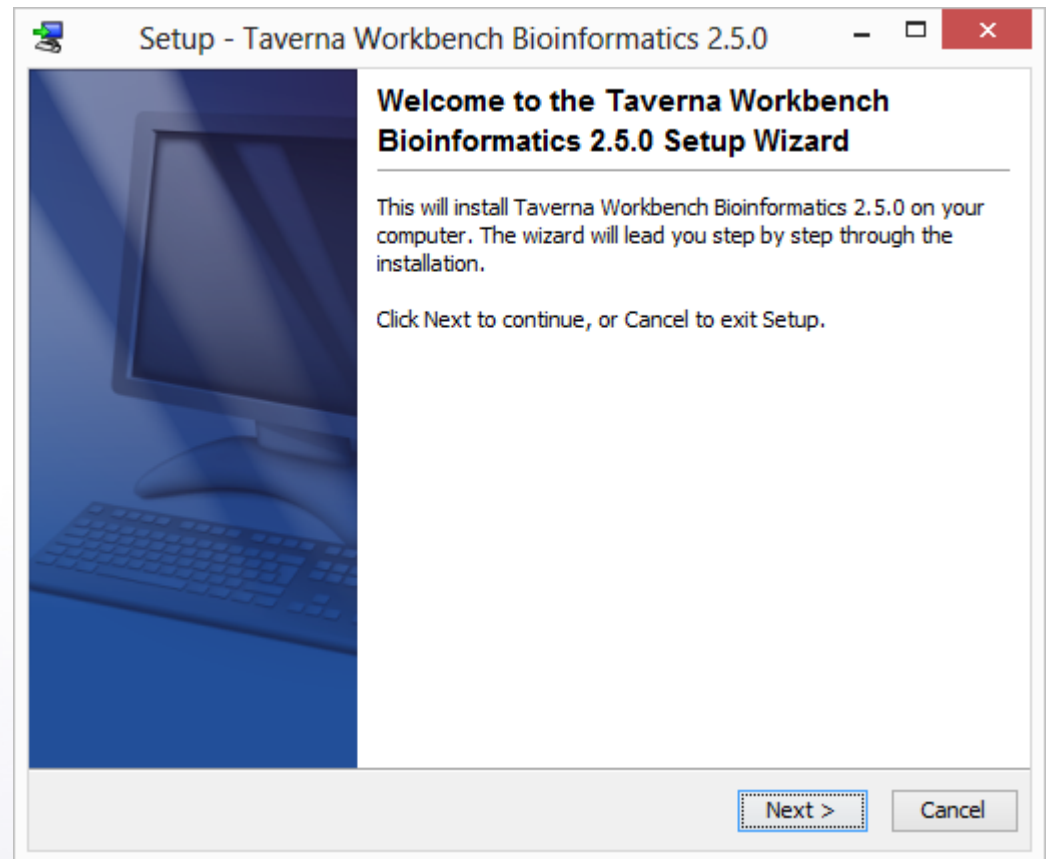
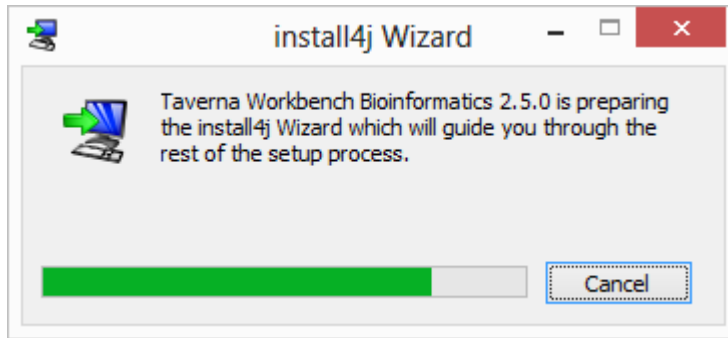


Taverna homepage

- Google **Taverna** or **Taverna workflow**
 - Alternatively, <http://www.taverna.org.uk/>
- Hover **Download**, click **Workbench**
 - Alternatively,
<http://www.taverna.org.uk/download/workbench/2-5/>
- Choose the **Bioinformatics** edition
 - <http://www.taverna.org.uk/download/workbench/2-5/bioinformatics/>
- Download for your operating system, e.g. **Taverna Workbench 2.5 for Windows (64-bit)**
 - If it does not work, try 32-bit



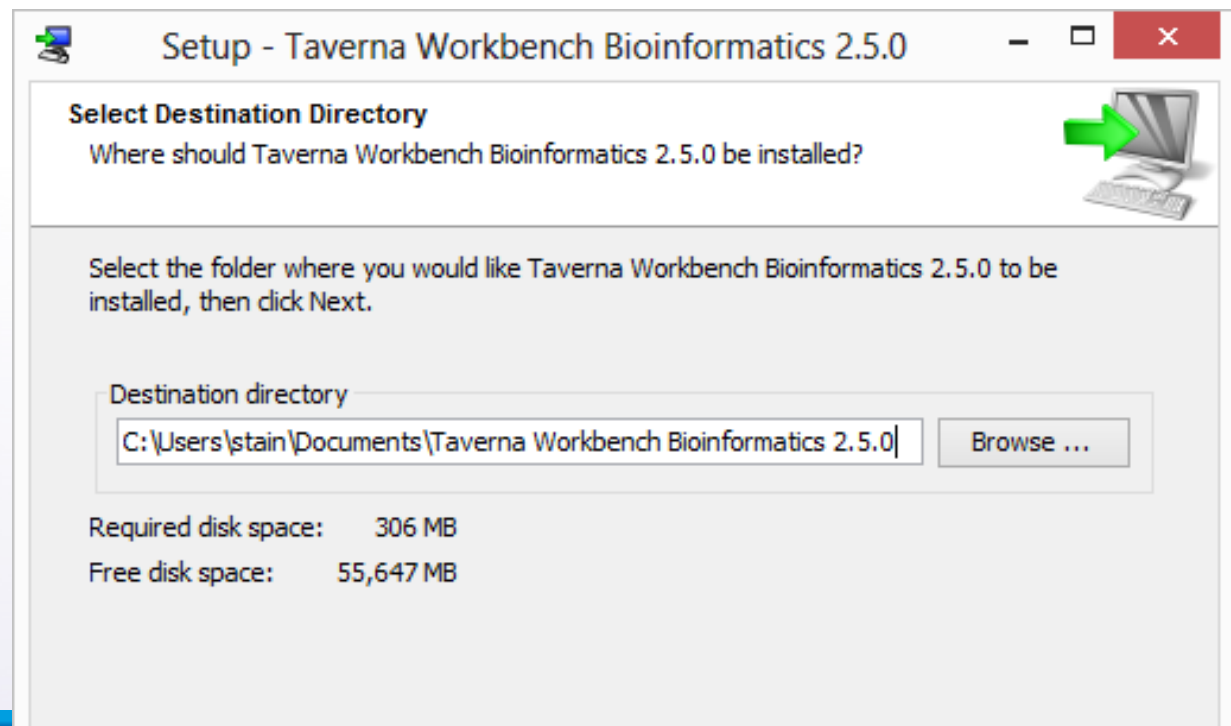
Click through Taverna's installer





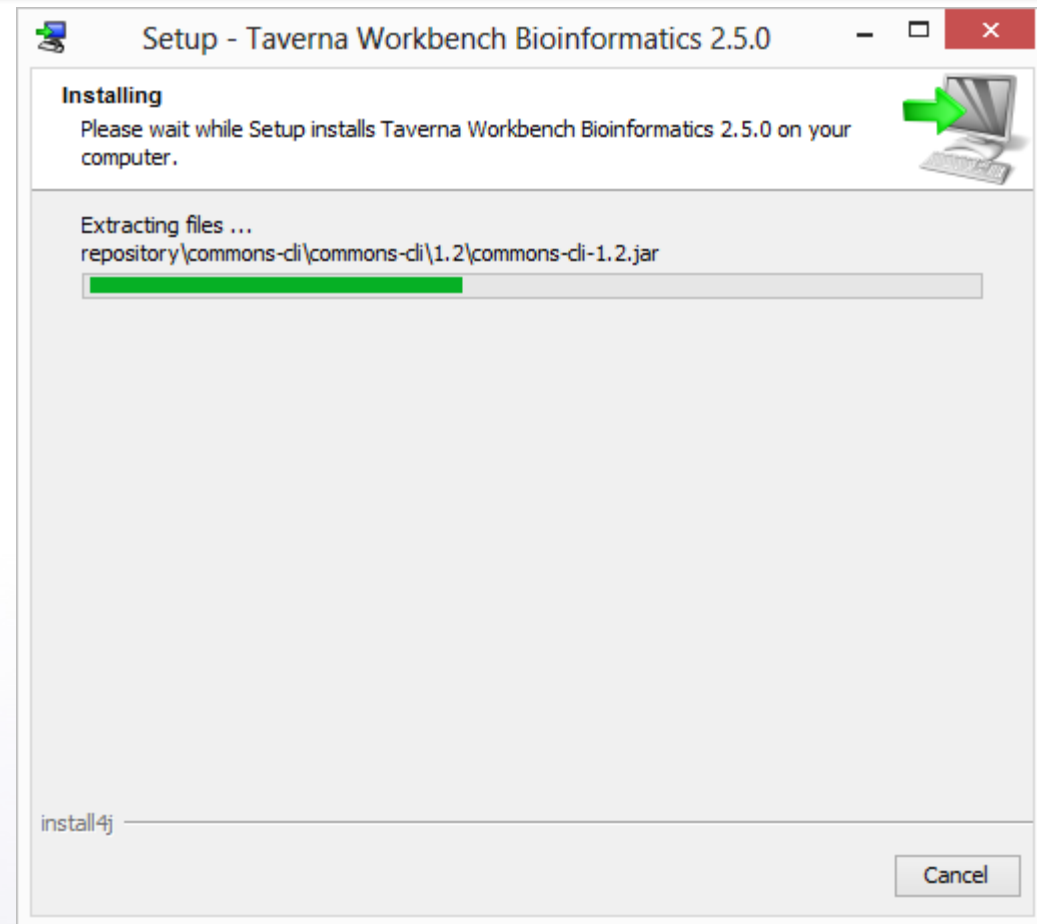
Install directory (Windows only)

- If you are an *administrator* on the computer, install to the default C:\Program Files
- Otherwise, install to My Documents, e.g. C:\Users\stain\Documents





- Click Next, Next to continue installation





After installation, Taverna Workbench Bioinformatics 2.5.0 will be in the Start menu

Start

stain

 Dell System Detect	 Intel® Graphics and Media Control Panel	 LastPass Importer	 LastPass Installer and Importer	 OneNote 2013	 PowerPoint 2013	 Microsoft Silverlight	 Adobe Reader XI	 VMware vSphere Client	 Shortcut to 232Analyzer.exe
 Mozilla Firefox	 About Java	 Skype for desktop	 InfoPath Designer 2013	 Publisher 2013	 Word 2013	 Dropbox	 Java Mission Control	 Bioclipse	 eclipse
 Check For Updates	 Configure Java	 InfoPath Filler 2013	 Outlook 2013	 Visio 2013	 Acrobat Distiller 9	 7-Zip File Manager	 Taverna Workbench Core 2.5.0	 paint.net	 GitHub
 Pageant	 PSFTP	 Access 2013	 Excel 2013	 Adobe Acrobat 9 Pro	 Adobe LiveCycle Designer ES 8.2	 Uninstall Dropbox	 Spotify	 Oracle VM VirtualBox	 R 386 3.1.1
 PuTTY	 PuTTYgen	 OneDrive for Business	 Lync 2013	 PC Checkup	 My Dell	 Google Chrome	 OneDrive	 R x64 3.1.1	 Taverna Workbench Bioinformatics 2.5.0



Starting Taverna for the first time



Taverna is currently supported by the BioVeL and SCAPE EU projects. Previously it received support from the EPSRC, OMII UK, myGrid and EBI. It includes contributions from Moby, Soaplab, BioMart and the University of Twente.

Starting application...

Taverna User Registration

Welcome to the Taverna User Registration Form
Please fill in this registration form to let us know that you are using Taverna

By registering you will:

- Allow us to support you better; future plans will be directed towards solutions Taverna users require
- Help sustain Taverna development; our continued funding relies on us showing usage
- (Optionally) Hear about news and product updates

Note that by registering:

- We do not have access to your data
- We do not have access to your service usage
- You will not be monitored
- We do record the information you provide at registration time

*First name:

*Last name:

*Email address:

Keep me informed of news and product updates via email

*Institution/Company name:

Industry type:

Field of investigation: (e.g. bioinformatics)

A brief description of how you intend to use Taverna: (e.g. genome analysis for bacterial strain identification)

I agree to the terms and conditions of registration at <http://www.taverna.org.uk/legal/terms>

File Edit Insert View Workflows Components Advanced Help



Design Results my myExperiment Service Catalogue

Service panel

Filter: Clear

Import new services

- Available services
- Service templates
- Local services
- Interaction

Workflow1



Workflow explorer Details Validation report

- Workflow1
 - Workflow input ports
 - Workflow output ports
 - Services
 - Data links
 - Control links
 - Merges



Standalone Taverna

- Alternative to installer
- Recommended for advance computer users only
- There is also a smaller “platform-neutral binaries”
 - This will require unzipping
 - This will require you to have a Java installed and in your file path
 - Requires dot to be installed.
 - You may need to set this up in Taverna as well.
 - You may also need to change the Java cryptography policy
 - Bat and sh files are provided for running the tavern jar